



INDIA
INTERNATIONAL
HOUSE
LIMITED

Cabinet Hardware



Knob



Avallon Knob
Weight: 0.252gm
Material: Brass
Finish: Polished Nickle

AK-12



Laurel Knob
Weight: 0.346gm
Material: Brass
Finish: Polished Nickle

LK-13



Maltesia Knob
Weight: 0.250gm
Material: Brass
Finish: Antique Brass

MK-14

Knob



Netropol Knob

Weight: 0.175/0.190gm

Material: Brass

Finish: Antique Brass/ Polished Brass (PB)

NK-12



Charleston Knob

Weight: 0.200gm

Material: Brass

Finish: Oil Rubbed Bronze

MK-14



Oxford Knob

Weight: 0.236gm

Material: Brass

Finish: Unlacquered

OK-17

Knob



Egg & Dart Knob

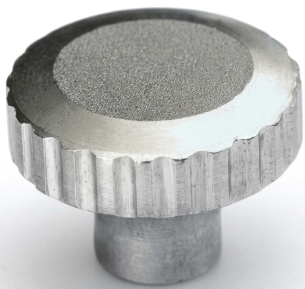
Weight: 0.200gm

Dimension: 8"

Material: Brass

Finish: Unlacquered/ Polished
Nickle

ED-14



Knurled Knob

Dimension: 38mm

Weight: 0.200gm

Material: Brass

CN-01



Classic Round

Cabinet Knob

Dimension: 25mm

Weight: 0.033gm

Material: Brass

CN-03

Cabinet Pull



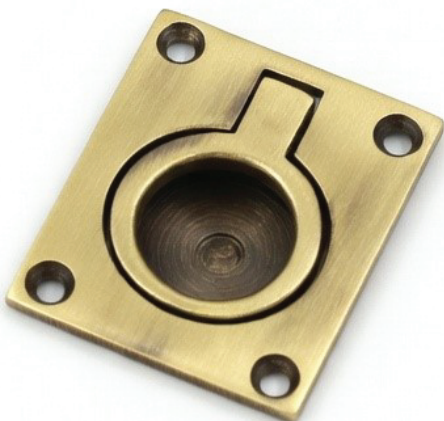
Cabinet Pul
Dimension: 50x38mm
Weight: 0.059gm
Material: Brass

CP-01



Cabinet Pull
Dimension: 89x45mm
Weight: 0.125gm
Material: Brass

CP-02



Cabinet Pull
Dimension: 1.75 x 1.25 x 1"
Weight: 0.051gm
Material: Brass

CP-03

Cabinet Pull



Cabinet Pull
Dimension: 45mm
Weight: 0.024gm
Material: Brass

CP-04



Pull Handle
Dimension: 6"
Weight: 0.280gm
Material: Brass

CP-08



Cabinet Pull



Deco Pull

Dimension: 6"

Weight: 0.326gm

Material: Brass

Finsh: Unlacquered

DP-09



Deco Pull

Dimension: 6"

Weight: 0.628gm

Material: Brass

Finsh: Polished Nickle

DP-10



Cabinet Pull



Dimension: 4"
Weight: 0.068gm
Material: Black Iron

CP-11

Dimension: 6"
Weight: 0.043gm
Material: Black Iron



CP-10





**INDIA
INTERNATIONAL
HOUSE
LIMITED**